

**AD 2 AERODROMES****VRDA AD 2.1 AERODROME LOCATION INDICATOR AND NAME****VRDA - MAAFARU INTERNATIONAL AIRPORT****VRDA 2.2 AERODROME GEOGRAPHICAL AND ADMINISTRATIVE DATA**

1	<i>ARP coordinates and site at AD</i>	054907N 0732811E Centre of runway
2	<i>Direction and distance from City</i>	200M from airport main entrance to the city
3	<i>Elevation / Reference temperature</i>	1.7M (5.5FT) / 31.4°C
4	<i>MAG VAR/Annual change</i>	3° W (2018) / Nil
5	<i>AD Operator</i> <i>Address</i>      <i>Telephone</i>  <i>E- mail Address</i> <i>Website:</i>	Island Aviation Services Limited Corporate Head Office Ground Floor, Dar Al-Eiman Building Majeedhee Magu Male', 20345 Republic of Maldives  Tel: (960) 333 5566 Telefax: (960) 331 4806 Email: <a href="mailto:info@iasl.aero">info@iasl.aero</a> Website: <a href="http://www.maldivian.aero">www.maldivian.aero</a>
6	<i>Types of traffic permitted (IFR/VFR)</i>	IFR/VFR
7	<i>Remarks</i>	Nil

**VRDA 2.3 OPERATIONAL HOURS**

1	<i>AD Administration</i>	H24
2	<i>Customs and Immigration</i>	HO
3	<i>Health and sanitation</i>	Nil
4	<i>AIS Briefing office</i>	Nil
5	<i>ATS Reporting Office (ARO)</i>	Nil
6	<i>Met Briefing Office</i>	Nil
7	<i>ATS</i>	H24
8	<i>Fuelling</i>	Nil
9	<i>Handling</i>	H24
10	<i>Security</i>	H24
11	<i>De-Icing</i>	Not applicable
12	<i>Remarks</i>	Nil

**VRDA 2.4 HANDLING SERVICES AND FACILITIES**

1	<i>Cargo handling facilities</i>	Yes
2	<i>Fuel/oil types</i>	Nil
3	<i>Fuelling facilities/capacity</i>	Nil
4	<i>De-icing facilities</i>	Not applicable
5	<i>Hanger space available for visiting aircraft</i>	Yes
6	<i>Repair facilities for visiting aircraft</i>	Nil
7	<i>Remarks</i>	Nil

### VRDA 2.5 PASSENGER FACILITIES

1	<i>Hotels</i>	In Maafaru Island
2	<i>Restaurants</i>	In Maafaru Island
3	<i>Transportation</i>	N/A
4	<i>Medical facilities</i>	Maafaru health center 400m away from the airport and limited first aid facility available at Maafaru Int'l Airport
5	<i>Bank/post</i>	Nil
6	<i>Tourist Office</i>	Nil
7	<i>Remarks</i>	Nil

### VRDA 2.6 RESCUE AND FIRE- FIGHTING SERVICES

1	<i>AD category for fire fighting</i>	CAT 7
2	<i>Rescue equipment</i>	Adequately provided as recommended by ICAO
3	<i>Capabilities for removal of disabled aircraft</i>	Equipped to remove light to medium aircraft
4	<i>Remarks</i>	Nil

### VRDA 2.7 SEASONAL AVAILABILITY – CLEARING

1	<i>Types of clearing equipment</i>	Nil
2	<i>Clearance priorities</i>	Nil
3	<i>Remarks</i>	Aerodrome available throughout the year

### VRDA 2.8 APRONS, TAXIWAYS AND CHECK LOCATIONS DATA

1	<i>Apron surface and strength</i>	Surface: Concrete Strength: PCN 48/R/B/W/T
2	<i>Taxiway width, surface and strength</i>	Width: 18M Surface: Asphalt - Concrete Strength: PCN 42/F/B/W/T
3	<i>Altimeter Checkpoint Location and Elevation</i>	Location: Center of Apron Elevation: 1.7M (5.5FT)
4	<i>VOR/INS checkpoint</i>	VOR: Nil INS: Nil
5	<i>Remarks</i>	Nil

### VRDA 2.9 SURFACE MOVEMENT GUIDANCE AND CONTROL SYSTEM AND MARKINGS

1	<i>Use of aircraft stand ID signs, TWY guide lines and visual docking/parking guidance system of aircraft stands</i>	N/A
2	<i>RWY/TWY markings and LGT</i>	RWY: Designations, THR, TDZ, Aiming point and centerline markings Edge lights, THR and End lights TWY: Centerline, holding positions marking and TWY edge lights
3	<i>Stop bars</i>	Nil
4	<i>Remarks</i>	Nil

**VRDA 2.10 AERODROME OBSTACLES**

In approach/TKOF areas			In circling area and at AD		Remarks
1			2		3
RWY/Area affected	Obstacle type elevation markings/LGT	Coordinates	Obstacle type elevation markings/LGT	Coordinates	
a	b	c	a	b	c
			Windsock 4M	054923.5N 0732830.6E	
			Apron Mast 1 14M	054930.4N 0732834.1E	
			Apron Mast 2 14M	054931.0N 0732835.0E	
			Apron Mast 3 14M	054931.8N 0732836.2E	
			Apron Mast 4 14M	054932.5N 0732837.2E	
			Lightening Arrester 15M	054927.2N 0732830.0E	
			Control Tower 13M	054926.8N 0732829.7E	
			Hangar 16M	054929.9N 0732833.4E	
			Ooredoo Tower (Island) 30M	054941.8N 0732847.5E	
			Dhiraagu Tower (Island) 45M	054953.8N 0732850.2E	

**VRDA 2.11 METEOROLOGICAL INFORMATION PROVIDED**

1	Associated MET Office	Nil
2	Hours of Service MET Office outside hours	Nil
3	Office responsible for TAF preparation Periods of validity	Nil
4	Type of landing forecast Interval of issuance	Nil
5	Briefing / consultation provided	Consultation with Maldives Meteorological Services Centre at VIA
6	Flight documentation Language(s) used	English
7	Charts and other INFO AVBL	Yes
8	Supplementary EQPT AVBL for INFO for briefing or consultation	Nil
9	ATS Units Provided with information	Yes. Wind & QNH
10	Additional Information	Nil

**VRDA 2.12 RUNWAY PHYSICAL CHARACTERISTICS**

Designation RWY NR	True BRG	Dimensions of RWY (M)	Strength (PCN) And surface of RWY and SWY	THR coordinates	THR elevation and highest elevation of TDZ of precision APP RWY
1	2	3	4	5	6
06	055.68°	2200 x 45	PCN 42/F/B/W/T Asphalt - Concrete	054846.72N 0732741.49E	THR 1.7M / 5.5FT
24	235.68°	2200 x 45		054927.01N 0732840.42E	THR 1.7M / 5.5FT

Slope	SWY	CWY	Strip	RESA	Location and	OFZ	Remarks
-------	-----	-----	-------	------	--------------	-----	---------

of RWY- SWY	Dimensions (M)	Dimensions (M)	Dimensions (M)	Dimensions (M)	description of ARST system		
7	8	9	10	11	12	13	14
0%	-	300 x 150	2320 x 140	90 X 60	Nil	Nil	Nil
0%	-	300 x 150	2320 x 140	90 X 60	Nil	Nil	Nil

### VRDA 2.13 DECLARED DISTANCES

RWY	TORA(M)	TODA(M)	ASDA(M)	LDA(M)	Remarks
1	2	3	4	5	6
06	2200	2500	2200	2200	Nil
24	2200	2500	2200	2200	Nil

### VRDA 2.14 APPROACH AND RUNWAY LIGHTING

RWY Designator	APP LGT type LEN INTST	THR LGT color WBAR	VASIS (MEHT) PAPI	TDZ LGT LEN	RWY center line LGT Length spacing color INTST	RWY edge LGT LEN spacing color INTST	RWY End LGT Color WBAR	SWY LGT LEN (M) color	Remark
1	2	3	4	5	6	7	8	9	10
06	-	Green	APAPI Left/3deg 50FT	Nil	Nil	2200M 60M White IH	Red	Nil	Nil
24	-	Green	APAPI Left/3deg 50FT	Nil	Nil	2200M 60M White IH At	Red	Nil	Nil

### VRDA 2.15 OTHER LIGHTING, SECONDARY POWER SUPPLY

1	ABN/IBN location characteristics and hours of operation	ABN – on top of the tower Alternate W & G EV minute
2	LDI location and LGT Anemometer location and LGT	Nil
3	TWY edge and centre line lighting	TWY edge lights / TWY A & B
4	Secondary power supply /switch-overtime	Back up generator of 80KW / 10-15 seconds
5	Remarks	Nil

### VRDA 2.16 HELICOPTER LANDING AREA

Nil

**VRDA 2.17 ATS AIRSPACE**

1	<i>Designation and lateral limits</i>	Maafaru CTR A circle, radius of 12NM centered at 054906.86N 0732810.95E (ARP)
2	<i>Vertical limits</i>	SFC to 6000FT AMSL
3	<i>Airspace classification</i>	D
4	<i>ATS Unit Language(s)</i>	Maafaru Tower English
5	<i>Transition Altitude</i>	11000FT
6	<i>Remarks</i>	VFR Traffic departing from islands within Maafaru CTR can climb up to 500 feet outside 7NM from Maafaru Airport.

**VRDA 2.18 ATS COMMUNICATION FACILITIES**

<i>Services Designation</i>	<i>Call sign</i>	<i>Channel (s)</i>	<i>Hours of operation</i>	<i>Remarks</i>
1	2	3	4	5
TWR	Maafaru Tower	118.6 MHz	HO	Separate frequency available to communicate from tower to ground

**VRDA 2.19 RADIO NAVIGATION AND LANDING AIDS**

Nil

**VRDA 2.20 LOCAL TRAFFIC REGULATIONS**

Nil

**VRDA 2.21 NOISE ABATEMENT PROCEDURE**

Nil

**VRDA 2.22 FLIGHT PROCEDURES**

**1. VFR operations within the vicinity of Maafaru**

VFR aircraft operating within Maafaru CTR shall contact Maafaru Tower frequency 118.6. When Maafaru Tower is closed, pilots may continue to monitor and transmit position information on Maafaru Tower frequency. VFR aircraft departing from resorts within Maafaru CTR outside 7NM from Maafaru can climb up to 500 feet without ATC clearance after transmitting their intention to depart on Maafaru Tower frequency 118.6.

**VRDA 2.23 ADDITIONAL INFORMATION**

Nil

**VRDA 2.24 CHARTS RELATED TO MAAFARU INTERNATIONAL AERODROME**

Chart Title	Page
Aerodrome Chart	VRDA AD 2-7
Aerodrome Lighting	VRDA AD 2-9
Aerodrome Marking	VRDA AD 2-11
Instrument Approach Chart – ICAO, RNP RWY 06	VRDA AD 2-13
Instrument Approach Chart – ICAO, RNP RWY 24	VRDA AD 2-15

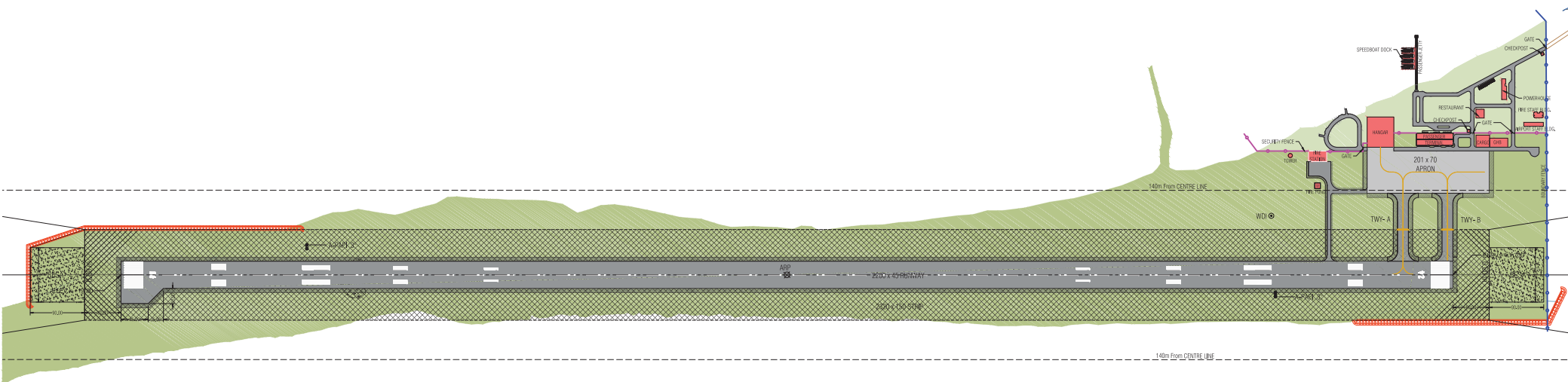
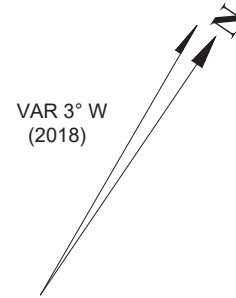
INTENTIONALLY LEFT BLANK

# AERODROME CHART

RWY	DIRECTION (TRUE)	THRESHOLD	BEARING STRENGTH
06	56°	05° 48' 46.72" N 73° 27' 41.49" E	RWY 06/24 PCN 42/F/B/W/T TWY A,B PCN 42/F/B/W/T
24	236°	05° 49' 27.01" N 73° 28' 40.42" E	APRON PCN 48/R/B/W/T

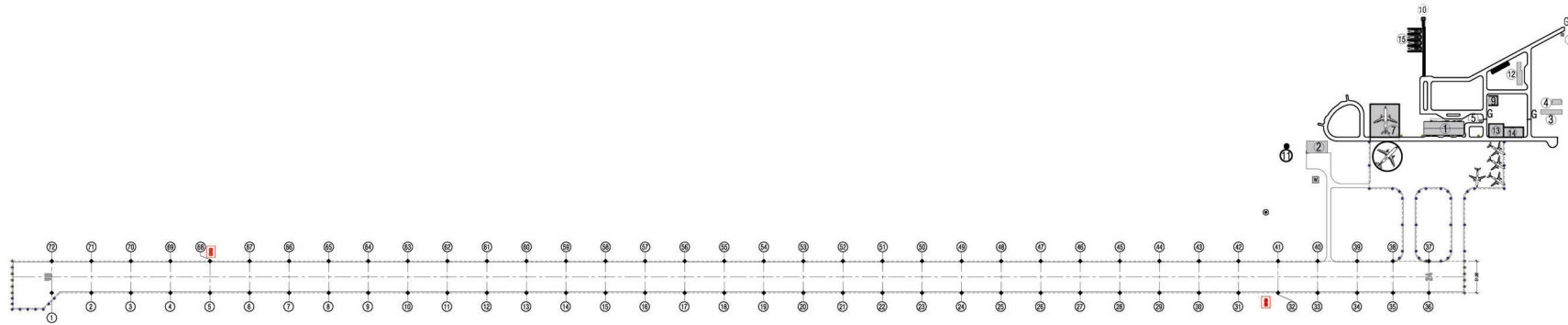
AERODROME 05° 49' 06.86" N  
REFERENCE POINT: 73° 28' 10.95" E

- AIRPORT AIRSIDE BOUNDARY
- AIRPORT LANDSIDE BOUNDARY



BUILDING LEGEND

- # NAME
- 1 PASSENGER TERMINAL
- 2 FIRE STATION
- 3 AIRPORT STAFF ACCOMMODATION
- 4 FIRE STAFF ACCOMMODATION
- 5 SECURITY CHECKPOST
- 7 HANGAR
- 9 PUBLIC RESTAURANT
- 10 PASSENGER JETTY
- 11 ATC
- 12 POWER HOUSE WITH RO PLANT ROOM
- 13 CARGO WAREHOUSE
- 14 GROUND HANDLING BASE
- 15 SPEED BOAT DOCKING PLATFORM
- G GATE
- W FIRE POND



NOTE:  
ALL LIGHTS ARE INSTALLED IN SHOULDER, 3M FROM PAVEMENT EDGE.  
RUNWAY EDGE LIGHTS IN 06 END, GRID 01-13 & GRID 65-72 IS ILLUMINATED IN YELLOW COLOR  
RUNWAY EDGE LIGHTS IN 24 END, GRID 27-36 & GRID 37-46 IS ILLUMINATED IN YELLOW COLOR

SYMBOL	DESCRIPTION	LOCATION	QTY
◆	EDGE LIGHTS	RUNWAY EDGE	73
●	EDGE LIGHTS	TAXIWAY, APRON & TURNING PAD EDGE	40
●	END LIGHTS	RUNWAY END	12
◆	INSET LIGHTS	RUNWAY (GRID-1)	01
+	FLOOD LIGHTS/ MAST	APRON LANDSIDE EDGE	04
■	APAPI	300M FROM RUNWAY PHYSICAL ENDS	02
○	WIND CONE / WCI	AS SHOWN	01

AIRFIELD LIGHTING LAYOUT

Scale 1:7000  
0 50m 100m 150m 200m 250m





<b>RUNWAY</b>		
RUNWAY CENTERLINE MARKING:	WHITE	
TOUCHDOWN/TOUCHDOWN ZONE MARKING:	WHITE	
RUNWAY EDGE/SEPARATOR MARKING:	WHITE	
THRESHOLD MARKINGS:	WHITE	
TURNING PAD MARKING:	YELLOW	
<b>TAXIWAY</b>		
TAXIWAY CENTERLINE MARKING:	YELLOW	
RUNWAY HOLDING POSITION MARKING:	YELLOW	
<b>APRON</b>		
APRON CENTERLINE MARKING:	YELLOW	
APRON/ROAD EDGE LINES MARKING:	RED LINE & WHITE LINE	
<b>BUILDING LEGEND</b>		
#	NAME	
1	PASSENGER TERMINAL	
2	FIRE STATION	
3	AIRPORT STAFF ACCOMMODATION	
4	FIRE STAFF ACCOMMODATION	
5	SECURITY CHECKPOST	
7	HANGAR	
9	PUBLIC RESTAURANT	
10	PASSENGER JETTY	
11	AIC	
12	POWER HOUSE WITH HD PLANT ROOM	
13	CARGO WAREHOUSE	
14	GROUND HANDLING BASE	
15	SPEED BOAT DOCKING PLATFORM	
G	GATE	
W	FIRE POND	

AIRFIELD MARKING LAYOUT

Scale 1:7000

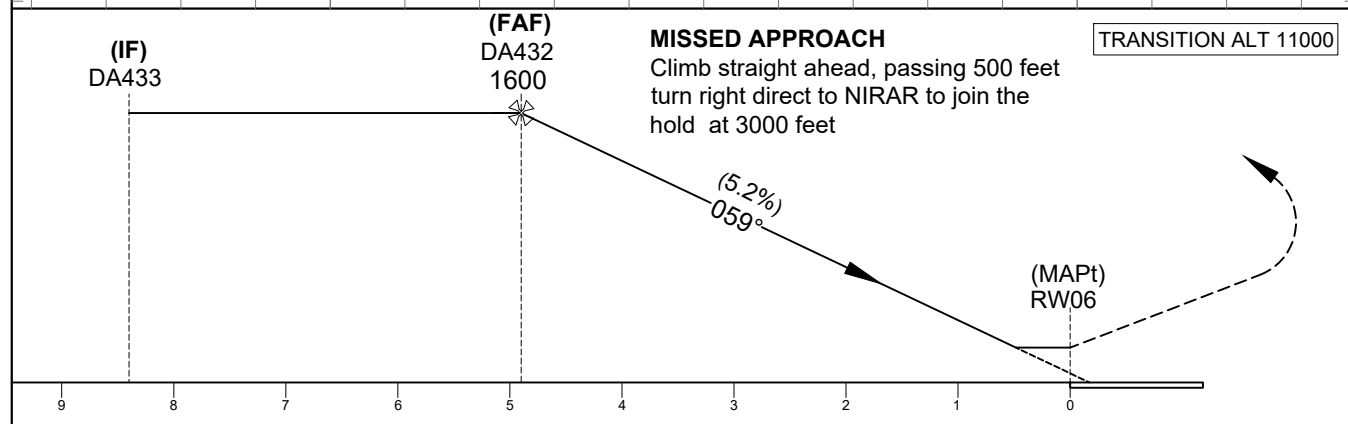
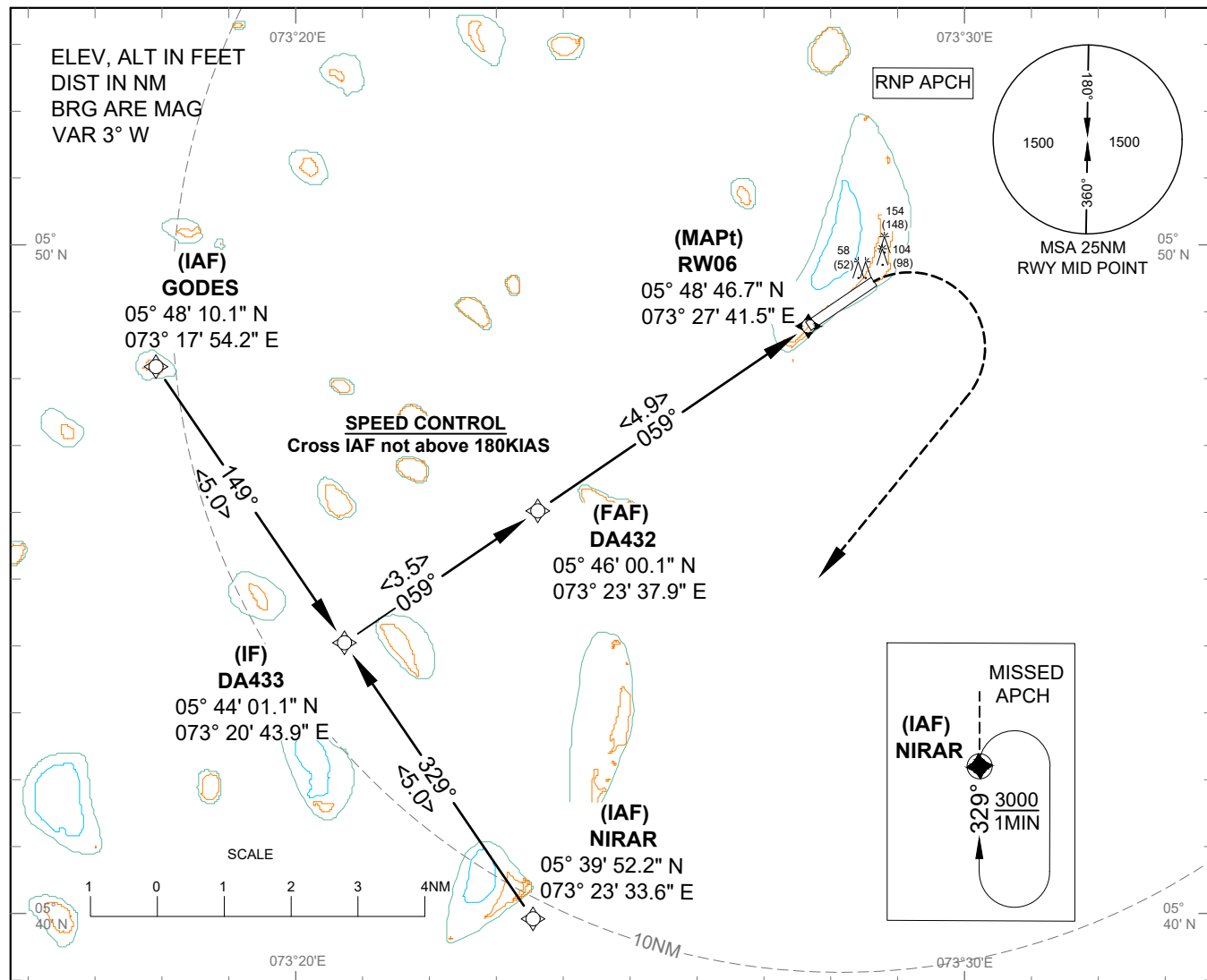


**INSTRUMENT  
APPROACH  
CHART - ICAO**

AERODROME ELEV 6 FT  
HEIGHT RELATED TO  
THR RWY 06 - ELEV 6 FT

TWR 118.6

**MAAFARU / Intl (VRDA)**  
RNP RWY06



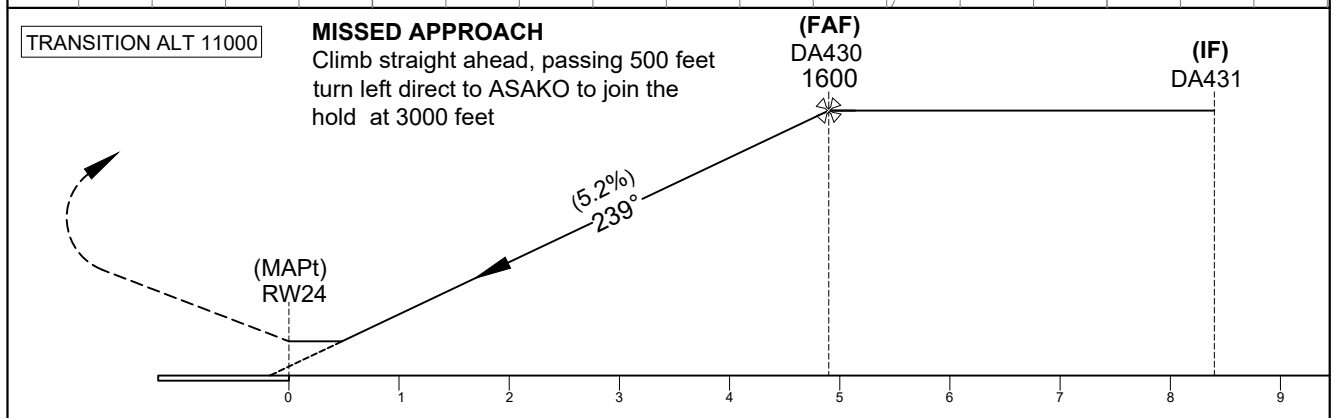
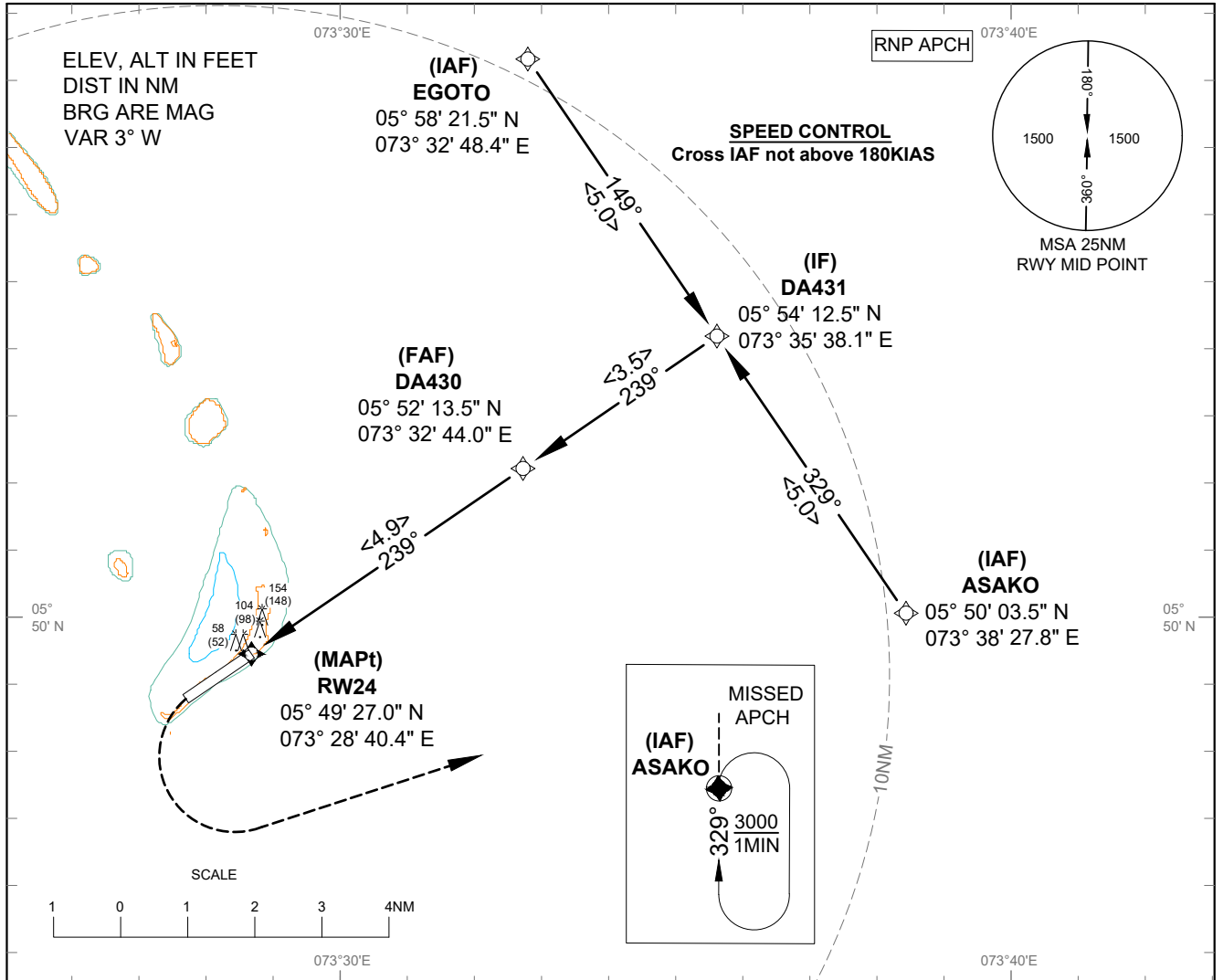
AIRCRAFT CATEGORY	A	B	C
LNAV MDA (MDH)	310 (304)		
DISTANCE TO THRESHOLD	4	3	2
ALTITUDE (HEIGHT)	1320 (1314)	1000 (994)	690 (684)
			MDA

**INSTRUMENT  
APPROACH  
CHART - ICAO**

AERODROME ELEV 6 FT  
HEIGHT RELATED TO  
THR RWY 24 - ELEV 6 FT

TWR 118.6

**MAAFARU / Intl (VRDA)**  
RNP RWY24

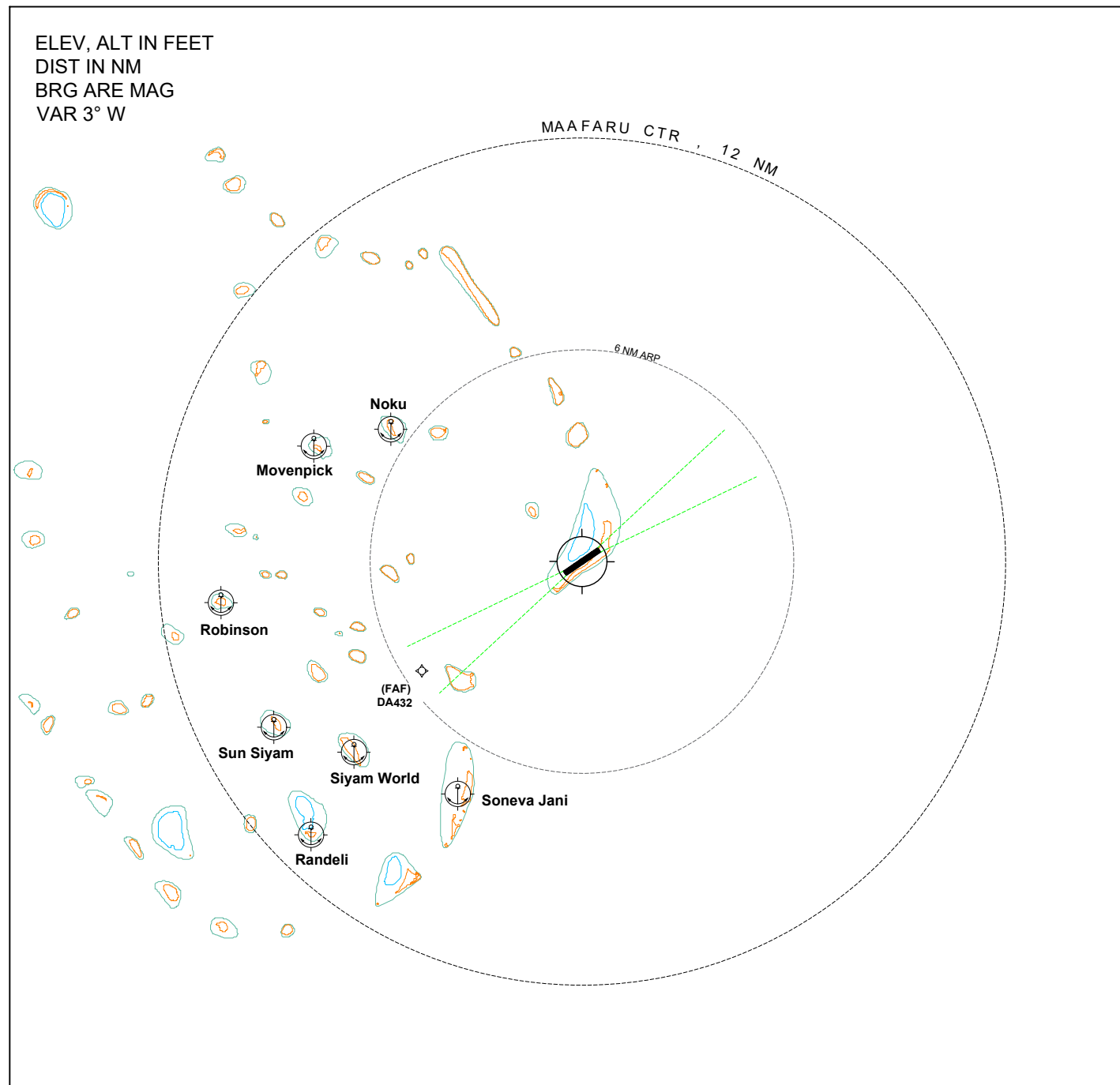


AIRCRAFT CATEGORY	A		B		C
LNAV MDA (MDH)	400 (394)				
DISTANCE TO THRESHOLD	4	3	2	1	
ALTITUDE (HEIGHT)	1320 (1314)	1000 (994)	690 (684)	MDA	

CONTROL ZONE AND  
VFR AREA CHART

TWR : 118.6

MAAFARU (VRDA)



1. Seaplanes departing from Floating Jetty sites located beyond 6NM of the ARP, if unable to communicate with the Tower while on water, may takeoff and climb to 500 feet before obtaining ATC clearance.
2. Seaplane pilots shall maintain radio communication on the Tower frequency, and exercise caution for aircraft landing/takeoff at Maafaru airport.

LEGEND	
Floating Jetty site	
Waypoint	
Aerodrome Reference Point (MAAFARU) 05° 49' 07" N 073° 28' 11" E	